

Service description

Product: SP200	Service description no: 3112-S008	Ver: 1
-------------------	---	-----------

Symptom

Replacement of the bearing.

Caused by

It is possible that something has stuck between the impeller and the pump housing, causing the drive shaft to be pressed down and damaging the bearing. Overlubricating the bearing can cause overheating and damage.

Solution

Replace the bearing.

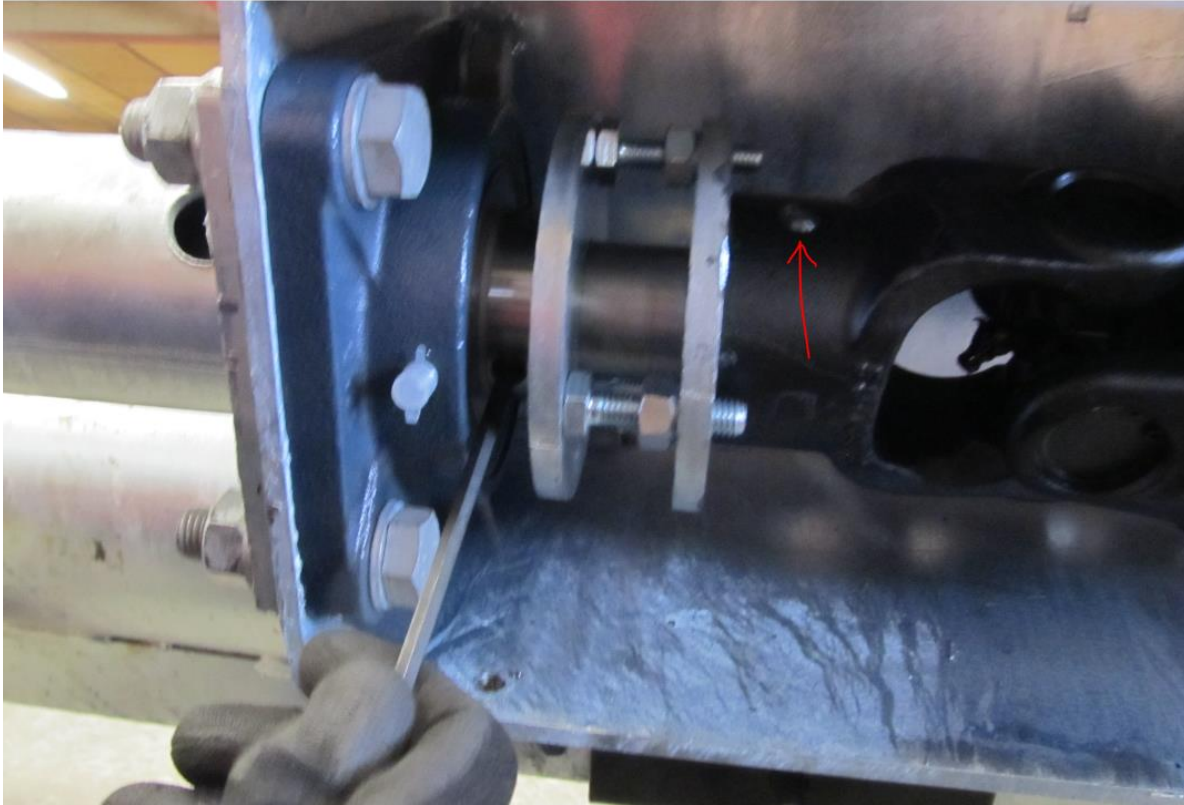
Release the set screws on the cover tube.



Release the cover tube where it is attached to the upper bearing. The bearing will also become loose.



Take out the breaker bolt which secures the drive shaft to the double joint. Release the set screws on the bearing.



Release the cutter on the pump housing.



Pull the drive shaft and impeller out through the pump housing. As a result, the double joint and the bearing at the opposite will detach from the drive shaft.

Put a new bearing on the drive shaft and assemble the pump by following the instructions in reverse order.